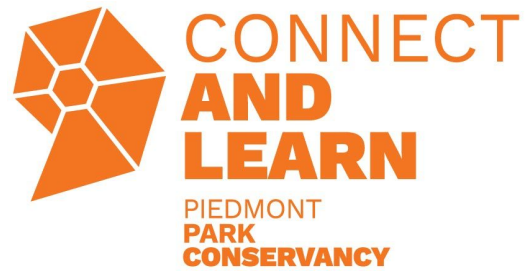


Butterfly Mobile

Repurpose old newspapers and a gallon jug while learning more about butterflies that call Georgia home with this eco-friendly craft!



Background

Georgia is home to over 160 types of butterflies! Some of the most common ones are highlighted below. Butterflies are important because they help our ecosystem thrive. Numerous plant species rely on them to transfer their pollen. Many scientists also study butterflies to learn from their various adaptations and reactions that allow them to weather changes or habitat destruction.

Tiger Swallowtail (GA State Butterfly)

Papilio glaucus

Identification: Yellow and dark black tiger striping

Size: 2 ½ - 4 ½ inches

Commonly found: In forests, suburbs, parks, or near water. Milkweed and Tulip Poplar trees are two popular plants they're attracted to.



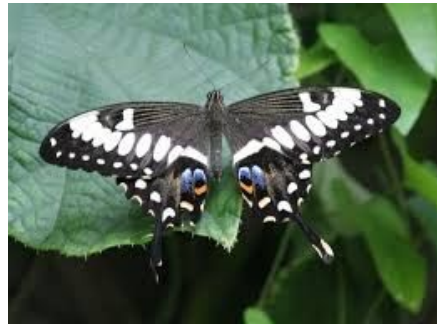
Black Swallowtail

Papilio polyxenis

Identification: Mostly black wings with a white band and spots of blue and orange

Size: 3 ¼ - 4 ¼ inches

Commonly found: In open areas, suburbs, marshes, or near roadways. Attracted to plants such as milkweed or thistles.



Cloudless Sulphur

Phoebis sennae

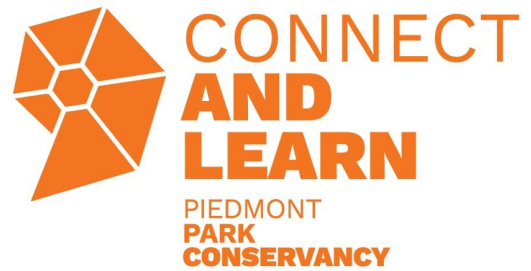
Identification: Bright neon yellow/green with brown flecks

Size: 2 ¼ - 3 ⅛ inches

Commonly found: Near busy open areas - parks, gardens, yards, and brush. Attracted to plants in the Legume family as well as many tubular flowers.



Butterfly Mobile



Monarch Butterfly

Danaus plexippus

Identification: Bright orange wings with distinct black lines and white spots

Size: 3 $\frac{3}{8}$ - 4 $\frac{7}{8}$ inches

Commonly found: Open fields, meadows, and weedy areas. Milkweeds are a major host plant.



Painted Lady

Vanessa cardui

Identification: Outer wings have a brown coloration with white spots, as the middle of the wings are a bright yellow

Size: 2 - 2 $\frac{7}{8}$ inches

Commonly found: Almost everywhere - open or trafficked. They frequent thistles and asters.



Butterfly Mobile

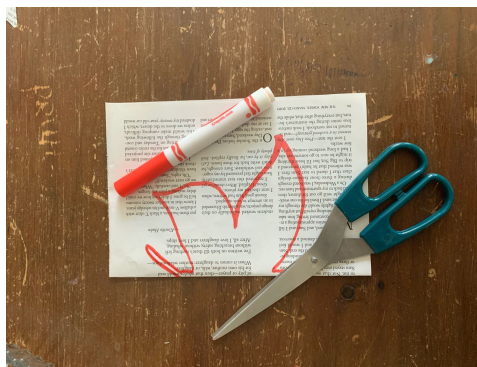
Materials

Gallon jug
Scissors
Magazines/Newspapers
Markers
Hole puncher (optional)
String



Procedure

1. Fold your recycled paper in half and outline half of a butterfly, then carefully cut along the lines. Repeat for each butterfly. You can do as many as you would like!



2. After cutting, use art materials to decorate your butterfly's wings.
3. Fold tape over the top corner of the wing of each butterfly, this will reinforce the paper so you can put string through it.



Butterfly Mobile



**CONNECT
AND
LEARN**

**PIEDMONT
PARK
CONSERVANCY**

4. Carefully cut out the handle of your gallon jug (with adult supervision). Outline your path before cutting!



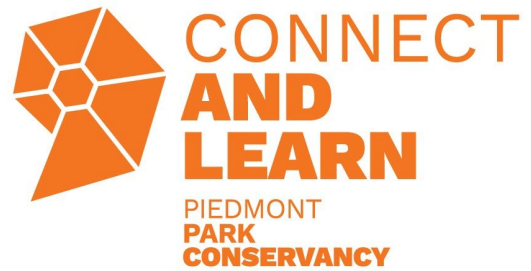
5. Using a hole puncher (or scissors), make a hole through the corners you previously taped.
6. Use string to tie your butterflies to the jug handle. Repeat for each.



7. Voila! Your mobile will hang by the jug handle and display your butterflies.



Butterfly Mobile



Extensions

- Mimicry is when an organism evolves to mimic another one. It can occur between the same species or different species. Monarch butterflies are mimicked by Viceroy butterflies - why would one species try to copy the other?
<http://blogs.britannica.com/2011/05/mutual-mimicry-vice-roy-monarch/>
- Camouflage is the act of blending in or disguising in order to survive (typically to evade predators). What kind of habitat would butterflies live in to camouflage themselves from predators? Refer to the pictures of the butterflies found in Georgia and think of places that they may be able to blend in!